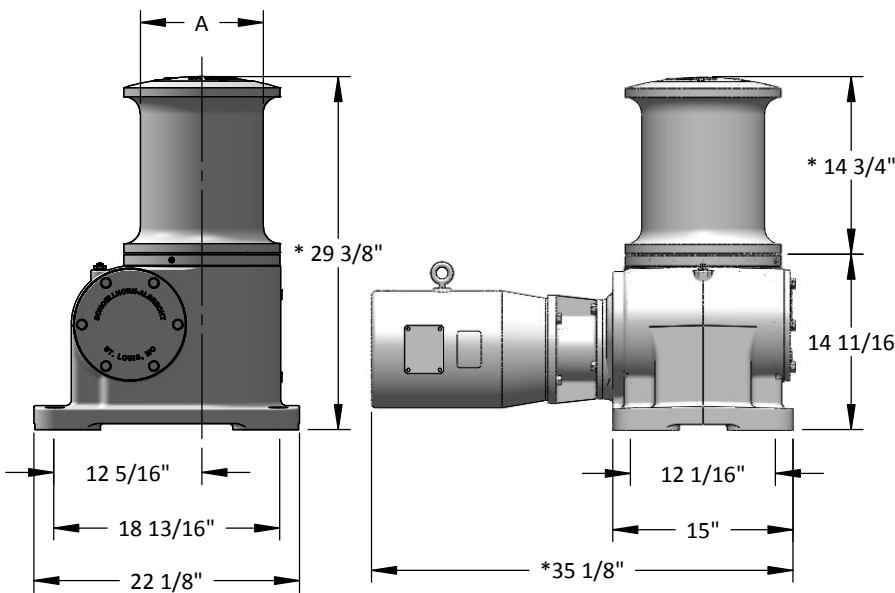
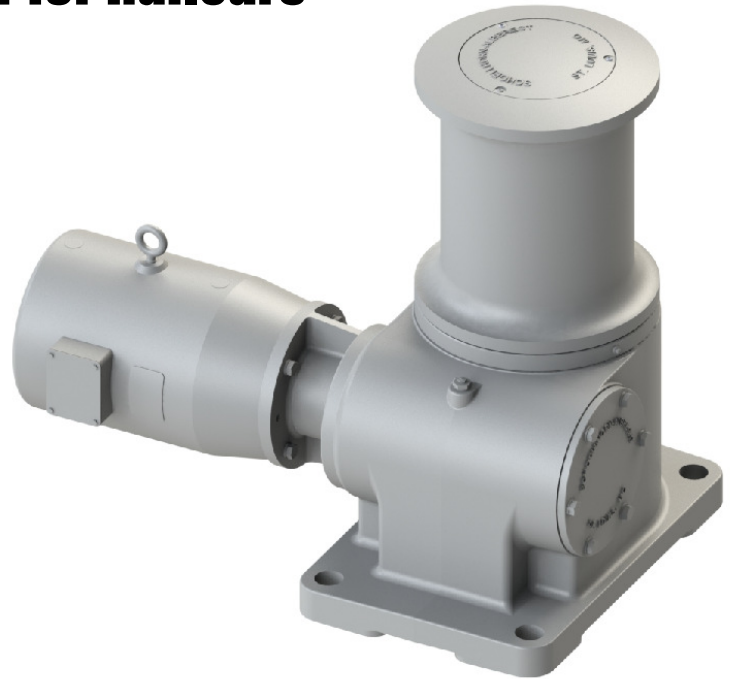


# Capstan Car Puller



## Model SA1014 Capstan/Carpuller for Railcars

- Cast Steel Capstan Barrel
- Double Taper Roller Bearings for Axial and Radial Load Control
- Spring Loaded Double Lip Seals
- High Strength Ductile Iron Gear Box
- Marine Sealed Motor, Pneumatic, Hydraulic, and Explosion Proof Options
- Positively Lubricated, Oil Immersed Gear Set with Reservoir and Sump
- Crane and Hoist Duty (High Starting Torque) Motors
- Precision Helical / Worm Gear Reduction Sets
- Heat Treated / High Alloy Steel Shafting
- Custom Magnetic Brake Available
- Standard & Custom Control Packages
- Special Barrels Available
- Complete Turn-Key Rail Car System Available
- Fill out our Customer Equipment Questionnaire for assistance on choosing the right equipment.



Model Number	"A" Barrel Size (inches)	Starting Pull (LBS)	Running Pull (LBS)	FPM
SA1014-5-20	10	15,200	7,600	20
SA1014-5-26	10	11,800	5,900	26
SA1214-5-24	12	12,600	6,300	24
SA1214-5-31	12	9,800	4,900	31
SA1014-7.5-20	10	22,800	11,400	20
SA1014-7.5-26	10	17,600	8,800	26
SA1214-7.5-24	12	19,000	9,500	24
SA1214-7.5-31	12	14,800	7,400	31
SA1214-10-24	12	25,200	12,600	24
SA1214-10-31	12	19,600	9,800	31

\* Dimensions noted are subject to modification

All dimensions are in inches and are subject to change

