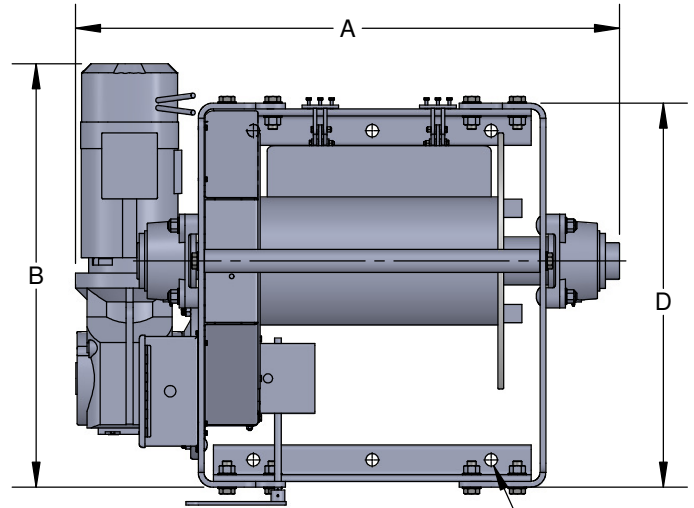


Winch Car Pullers

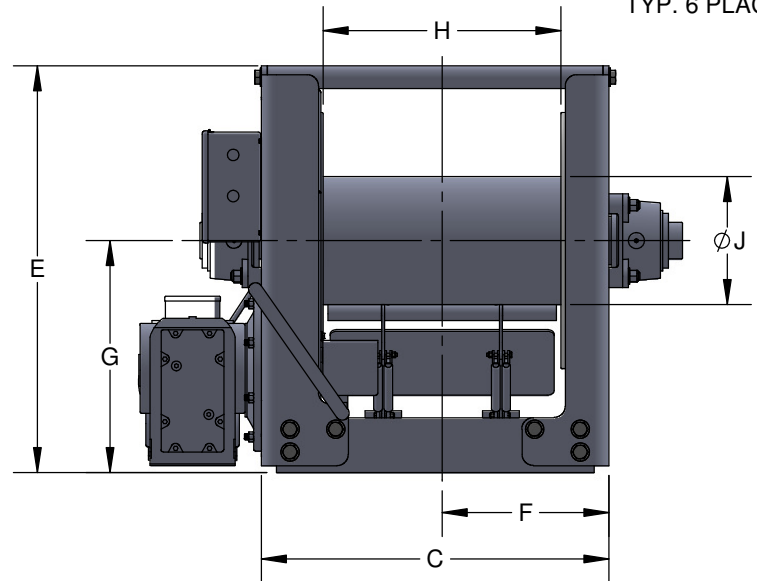
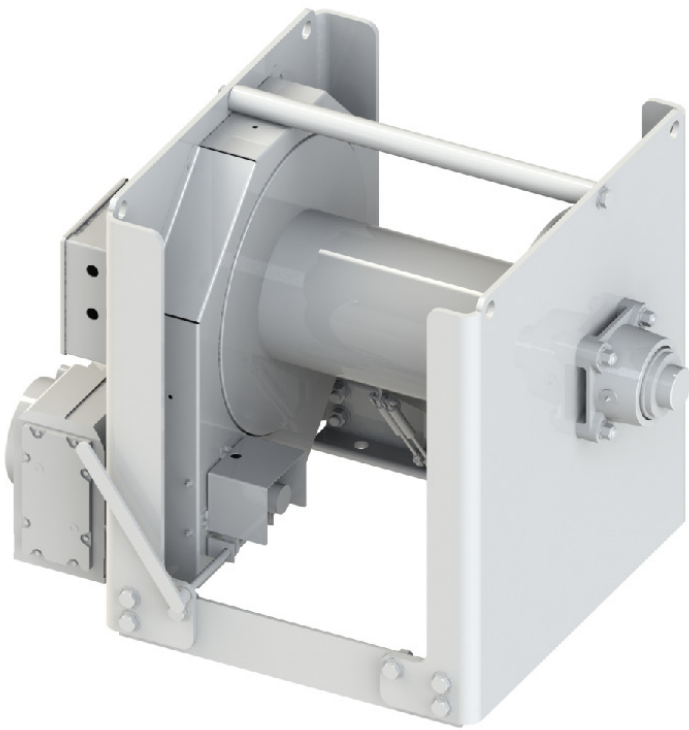


Winch Car Puller

- 230/460 Volt electric Gear Motor
- Brake System
- Gear Reducer
- Smooth-Face Drum
- Manual Clutch and Cable Pressure Bar
- Helical Gears manufactured to AGMA Standards
- Used for Flat or Sloped Track
- Custom Drum Capacity
- Standard & Custom Control Packages
- Custom Sizes Available
- Custom Coatings and Materials Available
- Complete Turn-Key Rail Car System Available
- Fill out our Customer Equipment Questionnaire for assistance on choosing the right equipment.



THRU. HOLES
TYP. 6 PLACES



Model No.	A	B	C	D	E	F	G	H	J
CPW-10-.750	46 ⁹ / ₁₆	43 ¹³ / ₃₂	29	33	34	13 ¹ / ₂	20	20	10
CPW-15-1.000	59 ¹ / ₂	46 ⁵ / ₁₆	38	42	44 ¹ / ₂	18 ¹ / ₄	25 ³ / ₈	26	14

All dimensions are subject to modification

All dimensions are in inches and are subject to change.

