

Snatch Block



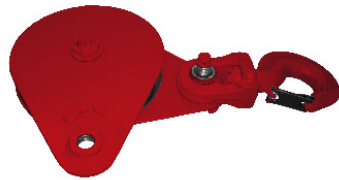
Snatch Block

The NYLITE Snatch Block maximizes a two-part lifting system without overstressing synthetic rope. The exclusive high-strength sheave reduces weight while providing the proper radius and groove shape to eliminate rope wear. The swivel plate has a locking bolt that makes change over easy and fast. The hook swivels under no- or low-load conditions.

- Maximizes a two-part lifting system
- Doesn't over-stress synthetic rope
- Exclusive high-strength sheave reduces weight and provides proper radius and groove shape to eliminate rope wear
- Swivel plate with locking bolt for easy and fast changeover
- Hook opening with latch is 1.5"
- Overall length 23.0"



SNATCH BLOCK
CLOSED POSITION

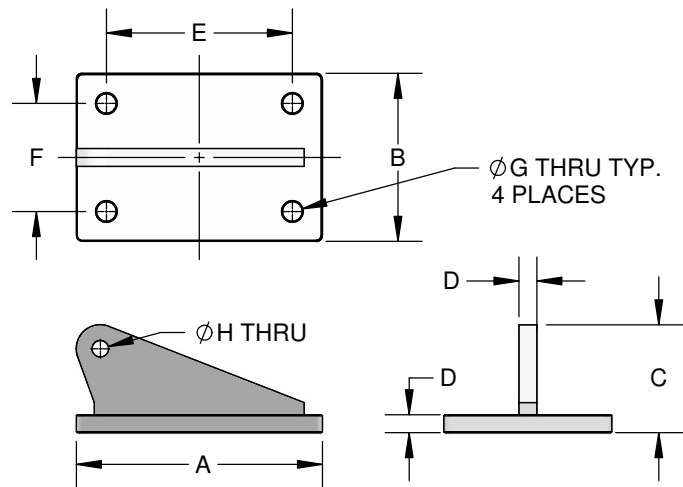
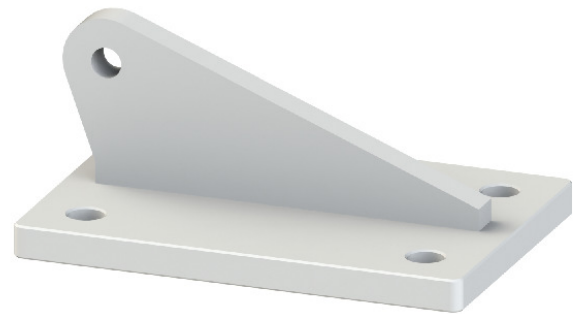


SNATCH BLOCK
FAST CHANGE OPEN

Snatch Block Model No.	ROPE SIZE	WORKING LOAD	WEIGHT
SB-1	7/8" - 1-1/8"	8 TONS	33 LBS.

Snatch Block Bracket

- Bracket is used to mount Snatch Block in position.
- Custom Coatings Available
- Custom Materials Available



Bracket Model No.	A	B	C	D	E	F	G	H
S57M	20 1/2	14	9	1 1/2	15 1/2	9	1 5/8	1 3/8

All dimensions are in inches and are subject to change.

